

AGROLAB, INC.
1009 MATTLIND WAY
MILFORD, DE 19963
PHONE: (302) 265-2734
FAX: (888) 412-0873
WWW.AGROLAB.US
ADMIN@AGROLAB.US



Serving Agriculture and Soil Fertility Professionals

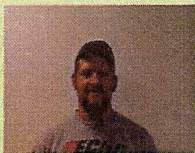
MISSION

It is the mission of AgroLab to provide reliable, responsive and independent analytical support to the agricultural industry and other soil fertility professionals.

STAFF



BILL ROHRER
President/General Manager



JACOB URIAN
Lab Technician



JENNIFER SHANER
Office Manager

www.agrolab.us

Volume I, Issue I

05/02/2011

AgroLab Inc. has established a solid business during the past nine months because of our customers. Thank you! We are proud to be an important part of the Agricultural and Turf businesses within Delmarva, New Jersey and southeast PA.

The key staff at AgroLab includes the following people:

Jennifer Shaner: Jennifer's role is office admin/management, and her duties are book keeping, database input/tracking and customer relations.

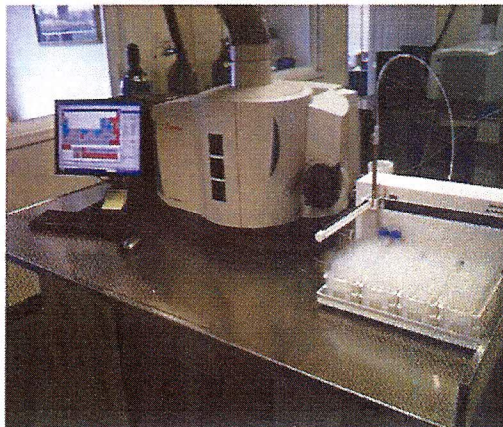
Jacob Urian: Jacob's role is lab operator. He calibrates, operates and maintains all lab instruments for analyzing customer samples, internal quality samples and external quality samples.

Bill Rohrer: My role as the owner and general manager involves assisting Jacob in the lab, business development, customer relations, sales, and establishing functional lab systems to accomplish our mission.

We just finished phase two of the business by setting up additional instruments to analyze plant tissue, plant petiole, soil nitrate (PSNT), manure, greenhouse media and fertilizer. A new instrument, called a flow injection nitrate analyzer, will provide a very accurate reading for Pre-sidedress Soil Nitrate Test (PSNT). Our database report will provide basic Nitrogen recommendations similar to the University of Delaware.

The following pages provide guidelines for sampling plant tissue. You will also find a complete services and fees outline. Good luck this summer and we look forward to helping you and your customers make important agronomic decisions.

Bill Rohrer



ABOUT AGROLAB...

MISSION

It is the mission of AgroLab to provide reliable, responsive and independent analytical support to the agricultural industry and other soil fertility professionals.



QUALITY

- Quality assurance procedures in place
- Check samples are run through the lab every 32 samples
- Active member and participant of the Agricultural Laboratory Proficiency Program (ALP)
- New and modern state of the art analytical equipment ensures the highest quality results

VALUES

- Customers First...Relationships Matter
- Precise, Efficient and Cost Conscious...Value Matters
- Fast Analytical Turnaround Time...Service Level Matters
- Professionalism...Reputation Matters
- Community Involvement...Stewardship Matters



ADDITIONAL SERVICES

- Drop off sites located within Delmarva
- Soil sample bags available at no cost
- UPS mailing labels provided if necessary

ANALYTICAL SERVICES & FEE SCHEDULE

Basic Soil Fertility (BSF)\$10.00

- Soil pH (1:1)
- Buffer pH (SMP index)
- Organic matter (%)
- Cation exchange capacity (meq/100g)
- Phosphorus (ppm P & FIV)
- University of DE Phosphorus Saturation Ratio
- Potassium (ppm K)
- Calcium (ppm Ca)
- Magnesium (ppm Mg)
- Hydrogen base saturation (% H)
- Potassium base saturation (% K)
- Calcium base saturation (% Ca)
- Magnesium base saturation (% Mg)

Delmarva Special (DS)\$14.00 ~~13.00~~ (additional analysis)

- Sulfur (ppm SO₄-S)
- Manganese (ppm Mn)
- Zinc (ppm Zn)
- Boron (ppm B)

Complete Soil Fertility (CSF)\$18.00 (additional analysis)

- Copper (ppm Cu)
- Iron (ppm Fe)
- Sodium (ppm Na)
- Sodium base saturation (% Na)

VOLUME DISCOUNTS

Volume discounts are available

